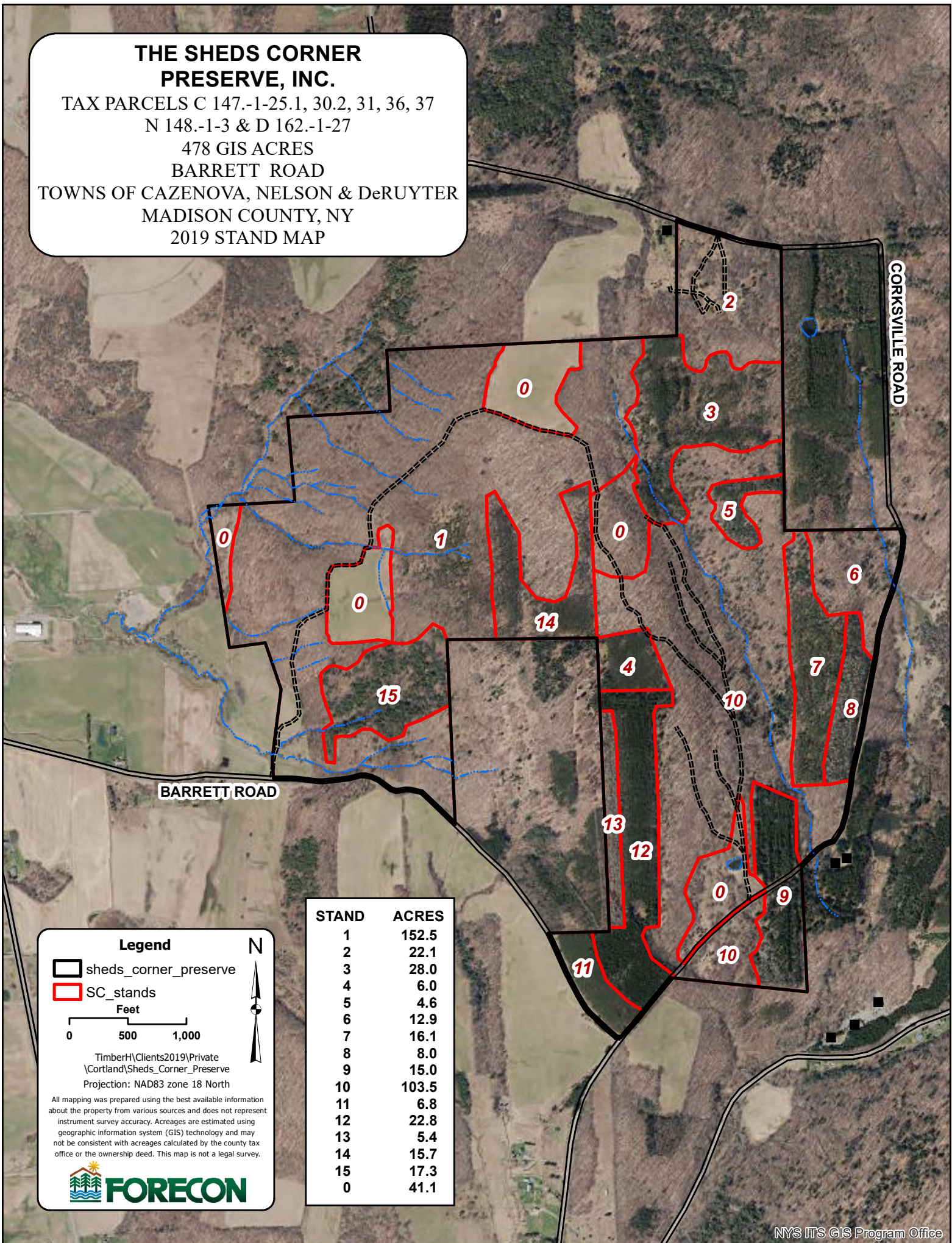


THE SHEDS CORNER PRESERVE, INC.

TAX PARCELS C 147.-1-25.1, 30.2, 31, 36, 37
N 148.-1-3 & D 162.-1-27

478 GIS ACRES
BARRETT ROAD

TOWNS OF CAZENOVA, NELSON & DeRUYTER
MADISON COUNTY, NY
2019 STAND MAP



STAND	ACRES
1	152.5
2	22.1
3	28.0
4	6.0
5	4.6
6	12.9
7	16.1
8	8.0
9	15.0
10	103.5
11	6.8
12	22.8
13	5.4
14	15.7
15	17.3
0	41.1

Legend

- sheds_corner_preserve
- SC_stands

Feet
0 500 1,000

TimberH\Clients2019\Private
\Cortland\Sheds_Corner_Preserve
Projection: NAD83 zone 18 North

All mapping was prepared using the best available information about the property from various sources and does not represent instrument survey accuracy. Acreages are estimated using geographic information system (GIS) technology and may not be consistent with acreages calculated by the county tax office or the ownership deed. This map is not a legal survey.