

GUILLAUME BLACK FAMILY

TAX PARCEL 181.00-01-024.122

176.22 ACRES

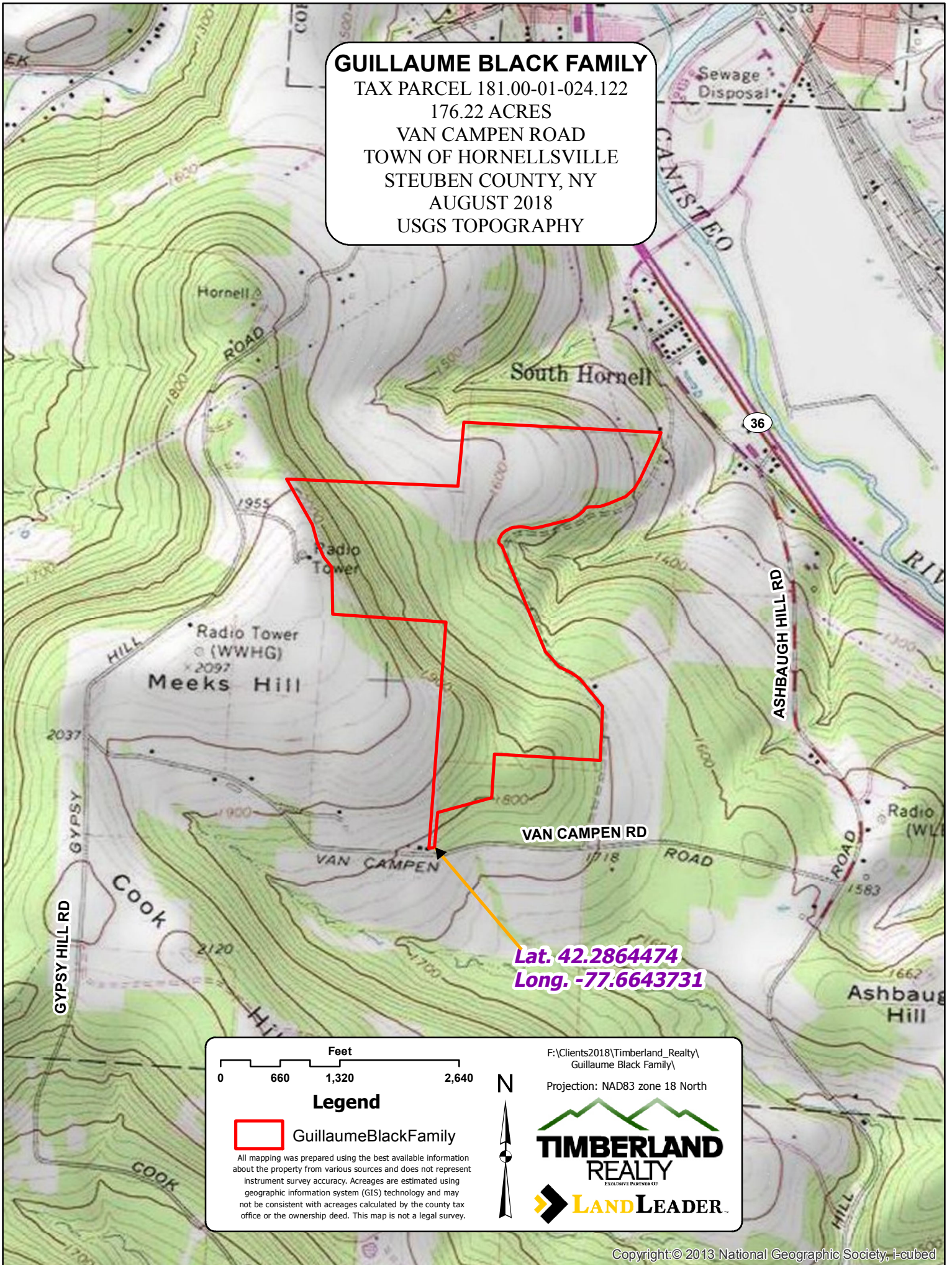
VAN CAMPEN ROAD

TOWN OF HORNELLSVILLE

STEBEN COUNTY, NY

AUGUST 2018


USGS TOPOGRAPHY



Lat. 42.2864474
Long. -77.6643731

0 660 1,320 2,640 Feet

Legend

 GuillaumeBlackFamily

All mapping was prepared using the best available information about the property from various sources and does not represent instrument survey accuracy. Acreages are estimated using geographic information system (GIS) technology and may not be consistent with acreages calculated by the county tax office or the ownership deed. This map is not a legal survey.

F:\Clients2018\Timberland_Realty\ Guillaume Black Family\
Projection: NAD83 zone 18 North

TIMBERLAND REALTY
EXCLUSIVE PARTNER OF
LAND LEADER