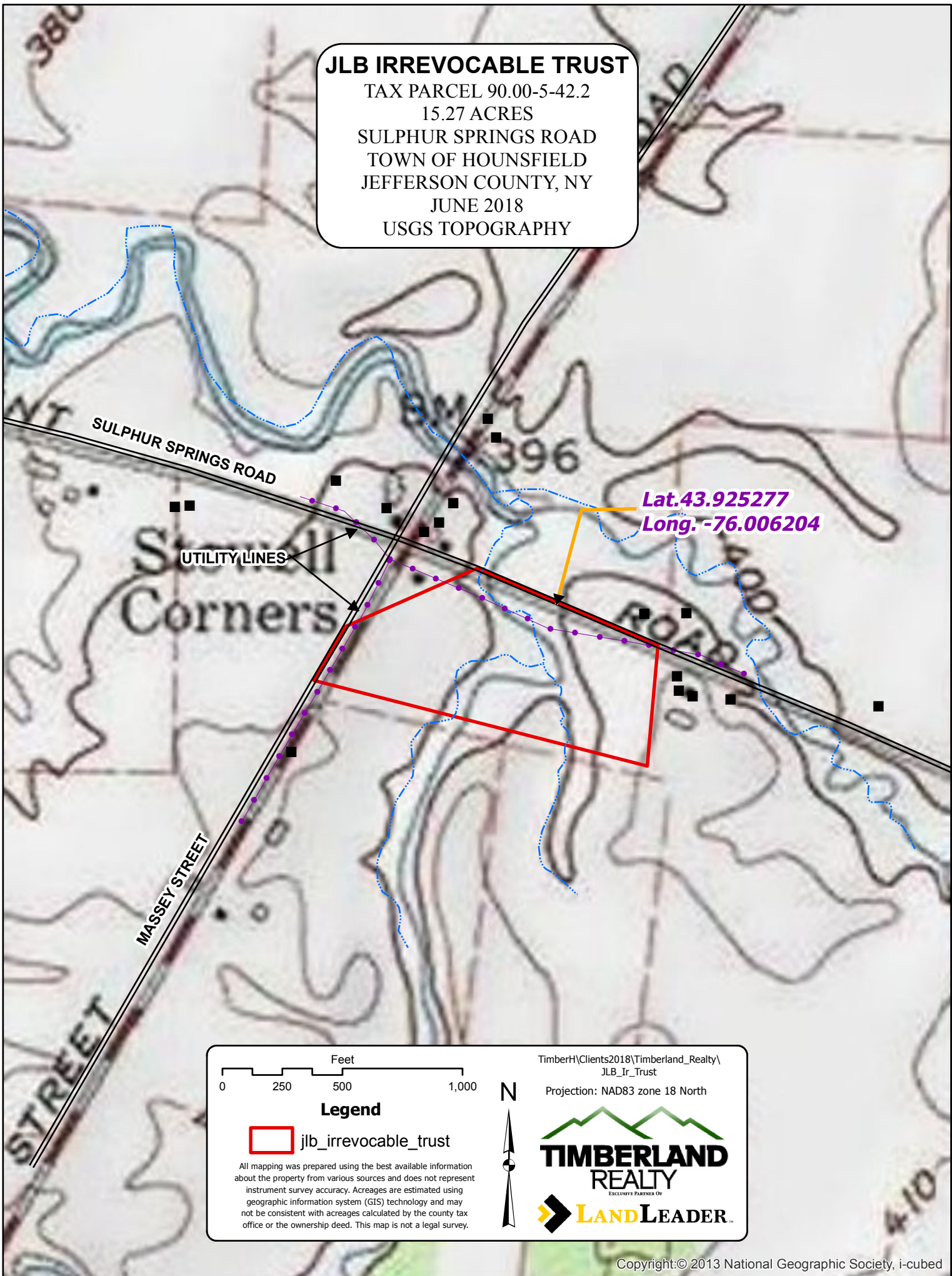


JLB IRREVOCABLE TRUST
 TAX PARCEL 90.00-5-42.2
 15.27 ACRES
 SULPHUR SPRINGS ROAD
 TOWN OF HOUNSFIELD
 JEFFERSON COUNTY, NY
 JUNE 2018
 USGS TOPOGRAPHY



Lat. 43.925277
 Long. -76.006204

TimberH\Clients2018\Timberland_Realty\
 JLB_Ir_Trust
 Projection: NAD83 zone 18 North

Legend

jlb_irrevocable_trust

All mapping was prepared using the best available information about the property from various sources and does not represent instrument survey accuracy. Acreages are estimated using geographic information system (GIS) technology and may not be consistent with acreages calculated by the county tax office or the ownership deed. This map is not a legal survey.

TIMBERLAND REALTY
 EXCLUSIVE PARTNER OF
LAND LEADER