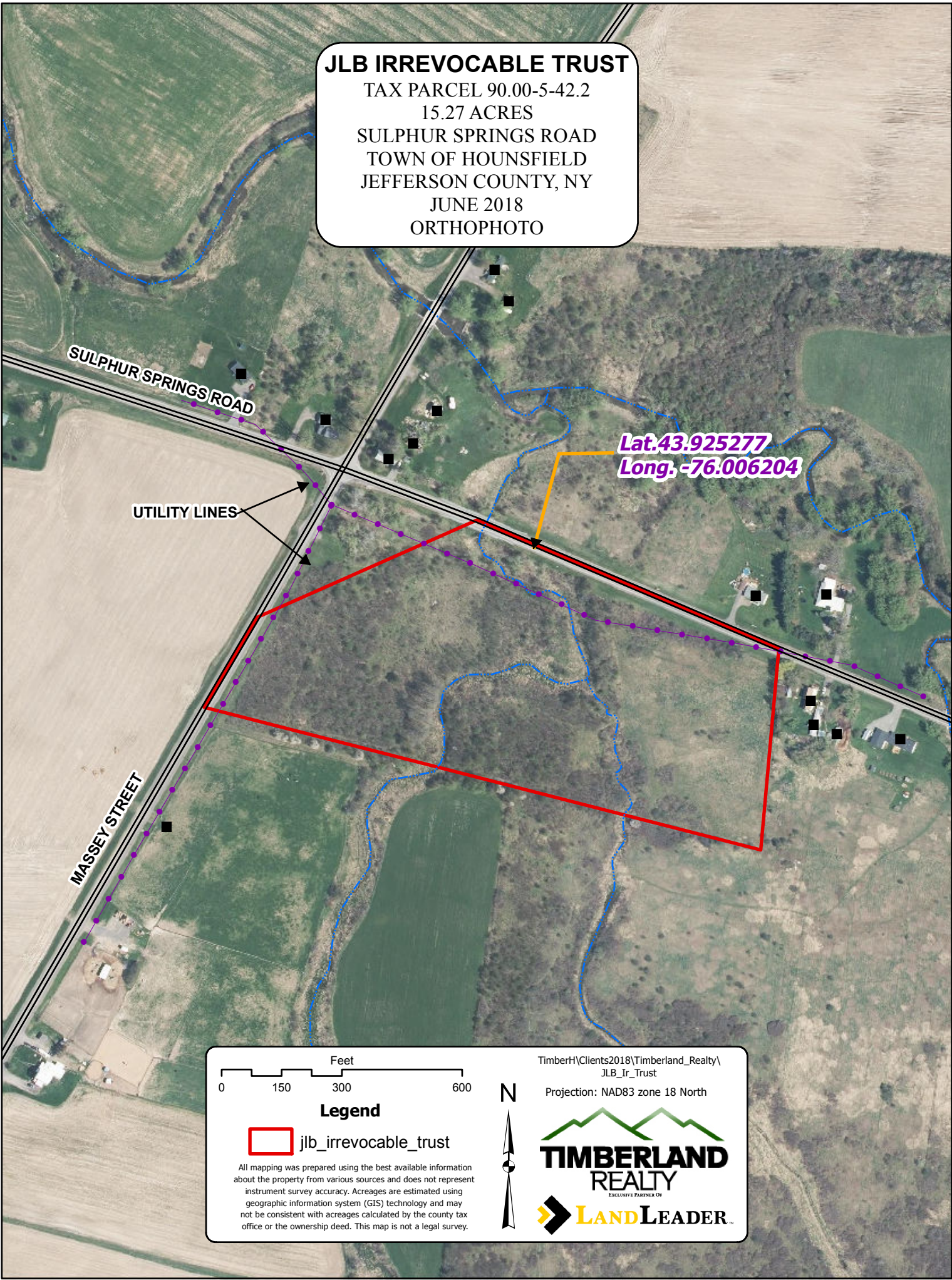


JLB IRREVOCABLE TRUST
TAX PARCEL 90.00-5-42.2
15.27 ACRES
SULPHUR SPRINGS ROAD
TOWN OF HOUNSFIELD
JEFFERSON COUNTY, NY
JUNE 2018
ORTHOPHOTO

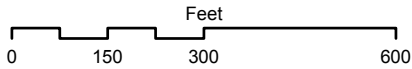


Lat. 43.925277
Long. -76.006204

UTILITY LINES

SULPHUR SPRINGS ROAD

MASSEY STREET



Legend

 jlb_irrevocable_trust

All mapping was prepared using the best available information about the property from various sources and does not represent instrument survey accuracy. Acreages are estimated using geographic information system (GIS) technology and may not be consistent with acreages calculated by the county tax office or the ownership deed. This map is not a legal survey.



TimberH\Clients2018\Timberland_Realty\
JLB_Ir_Trust
Projection: NAD83 zone 18 North

