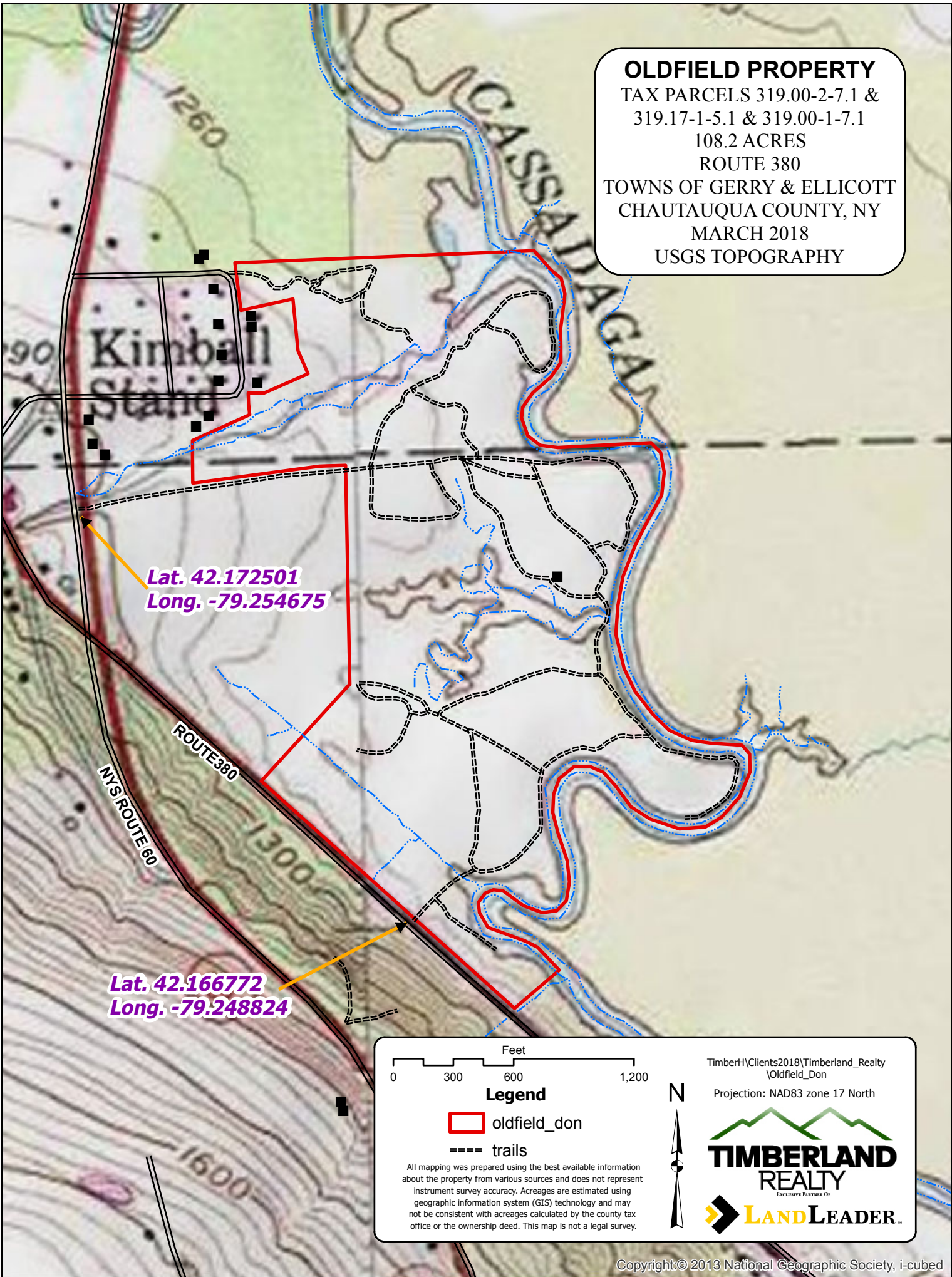
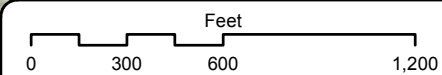


OLDFIELD PROPERTY
 TAX PARCELS 319.00-2-7.1 &
 319.17-1-5.1 & 319.00-1-7.1
 108.2 ACRES
 ROUTE 380
 TOWNS OF GERRY & ELLICOTT
 CHAUTAUQUA COUNTY, NY
 MARCH 2018
 USGS TOPOGRAPHY



Lat. 42.172501
 Long. -79.254675

Lat. 42.166772
 Long. -79.248824



- Legend**
- oldfield_don
 - ==== trails

All mapping was prepared using the best available information about the property from various sources and does not represent instrument survey accuracy. Acreages are estimated using geographic information system (GIS) technology and may not be consistent with acreages calculated by the county tax office or the ownership deed. This map is not a legal survey.



TimberH\Clients2018\Timberland_Realty
 \Oldfield_Don
 Projection: NAD83 zone 17 North

