

GIRL SCOUTS IN THE HEART OF PA

GOLDEN POND

TAX PARCELS 53-07-16.1 & 13

290.59 ACRES DEEDED

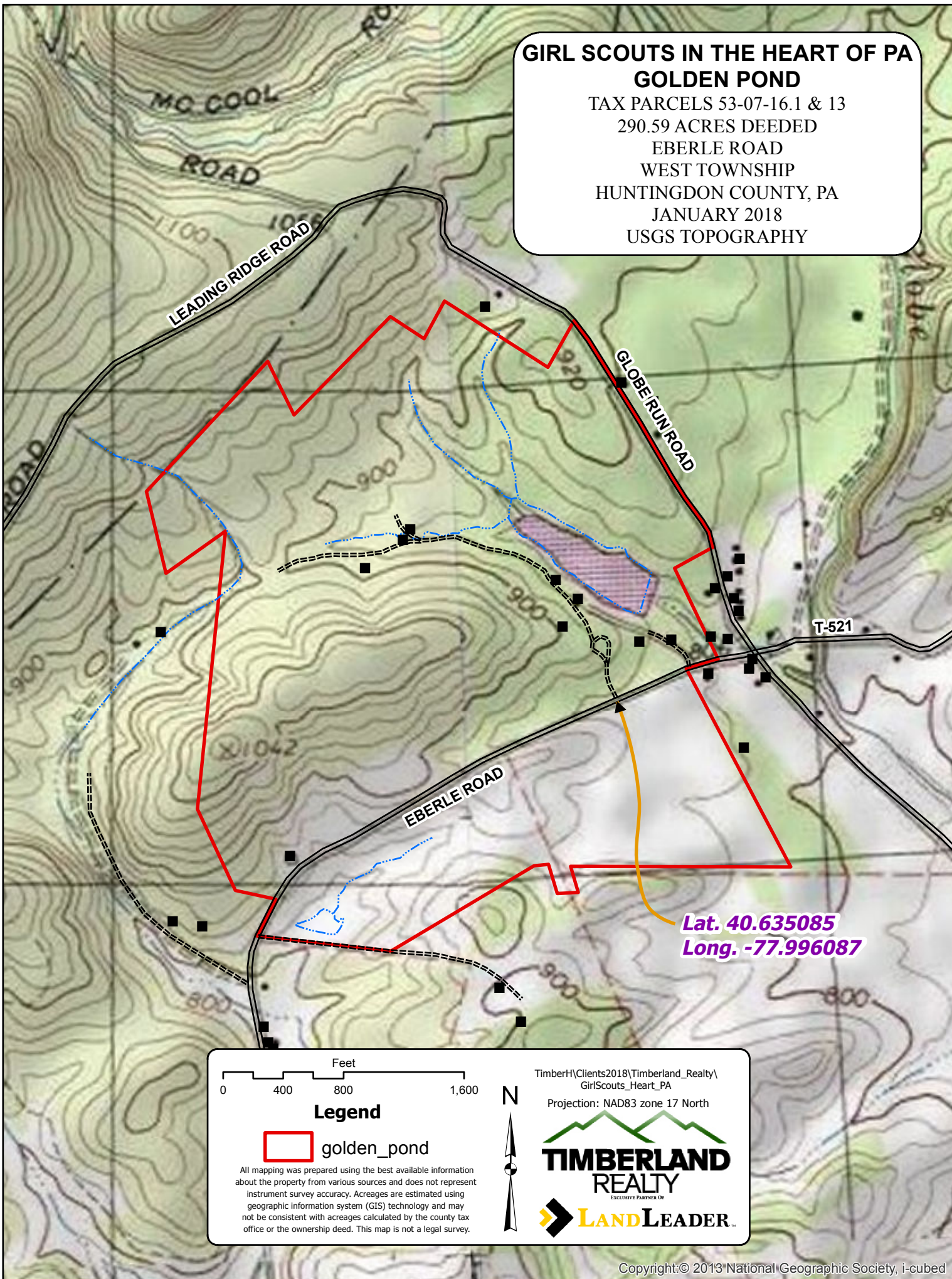
EBERLE ROAD

WEST TOWNSHIP

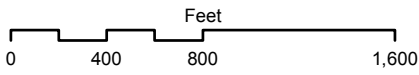
HUNTINGDON COUNTY, PA

JANUARY 2018

USGS TOPOGRAPHY



Lat. 40.635085
Long. -77.996087



Legend
 golden_pond

All mapping was prepared using the best available information about the property from various sources and does not represent instrument survey accuracy. Acreages are estimated using geographic information system (GIS) technology and may not be consistent with acreages calculated by the county tax office or the ownership deed. This map is not a legal survey.

TimberH\Clients2018\Timberland_Realty\
GirlsScouts_Heart_PA
Projection: NAD83 zone 17 North

