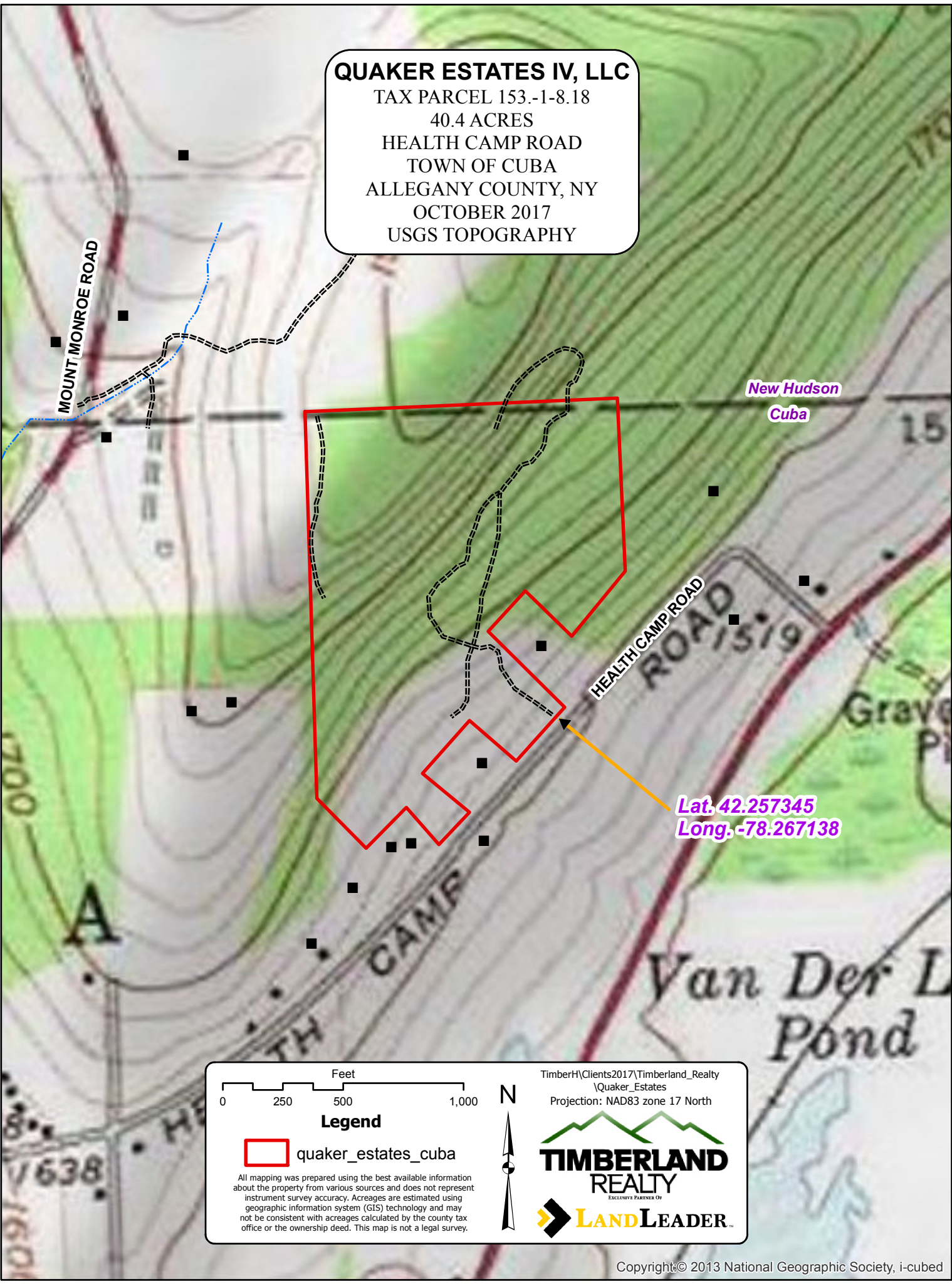


QUAKER ESTATES IV, LLC
 TAX PARCEL 153.-1-8.18
 40.4 ACRES
 HEALTH CAMP ROAD
 TOWN OF CUBA
 ALLEGANY COUNTY, NY
 OCTOBER 2017
 USGS TOPOGRAPHY



New Hudson
Cuba

Lat. 42.257345
Long. -78.267138

0 250 500 1,000 Feet

Legend

quaker_estates_cuba

All mapping was prepared using the best available information about the property from various sources and does not represent instrument survey accuracy. Acreages are estimated using geographic information system (GIS) technology and may not be consistent with acreages calculated by the county tax office or the ownership deed. This map is not a legal survey.

TimberH\Clients2017\Timberland_Realty
 \Quaker_Estates
 Projection: NAD83 zone 17 North

TIMBERLAND REALTY
 EXCLUSIVE PARTNER OF
LAND LEADER