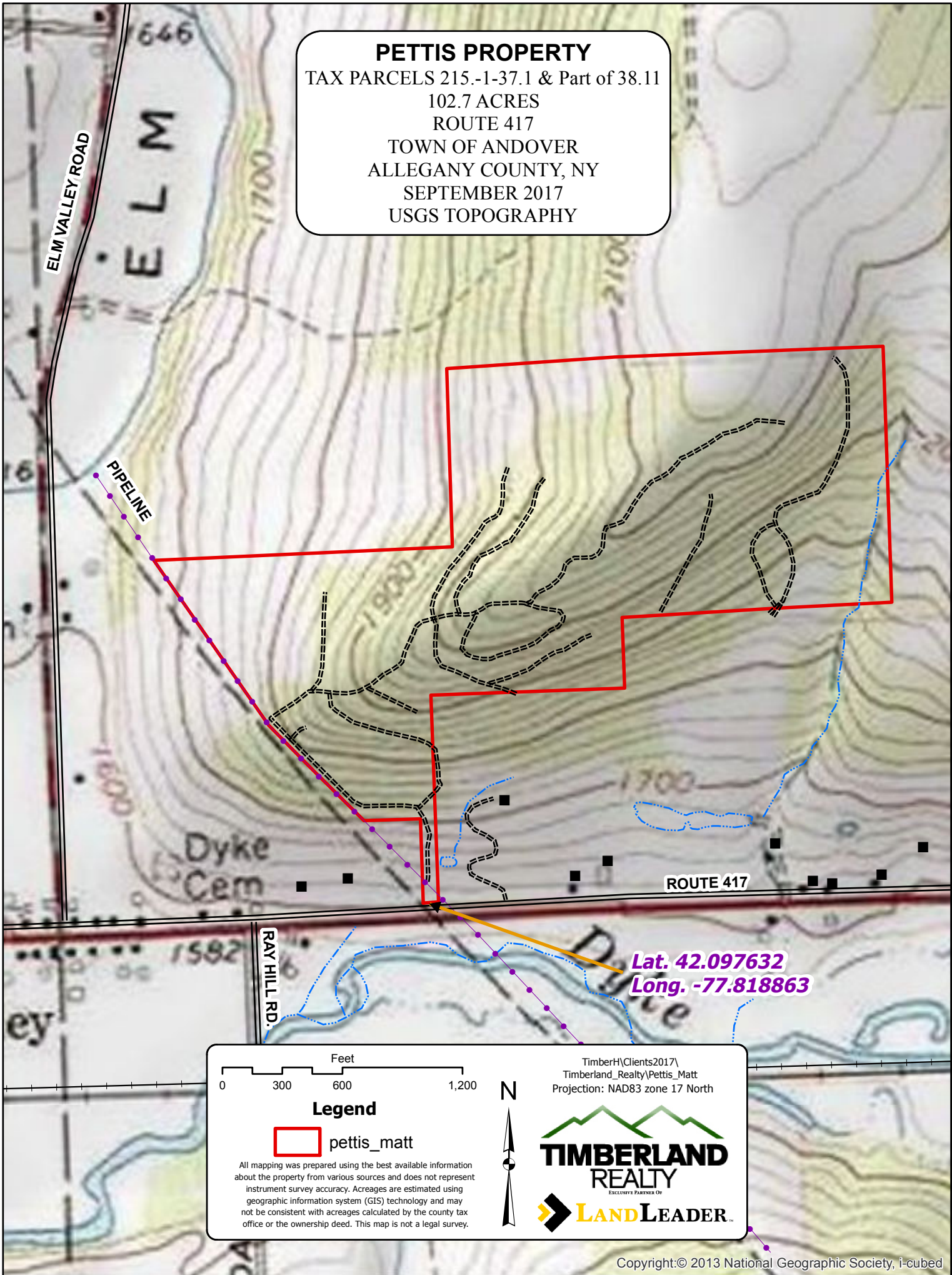


PETTIS PROPERTY
 TAX PARCELS 215.-1-37.1 & Part of 38.11
 102.7 ACRES
 ROUTE 417
 TOWN OF ANDOVER
 ALLEGANY COUNTY, NY
 SEPTEMBER 2017
 USGS TOPOGRAPHY



TimberH\Clients2017\
 Timberland_Realty\Pettis_Matt
 Projection: NAD83 zone 17 North

Legend

pettis_matt

All mapping was prepared using the best available information about the property from various sources and does not represent instrument survey accuracy. Acreages are estimated using geographic information system (GIS) technology and may not be consistent with acreages calculated by the county tax office or the ownership deed. This map is not a legal survey.

TIMBERLAND REALTY
 EXCLUSIVE PARTNER OF
LAND LEADER