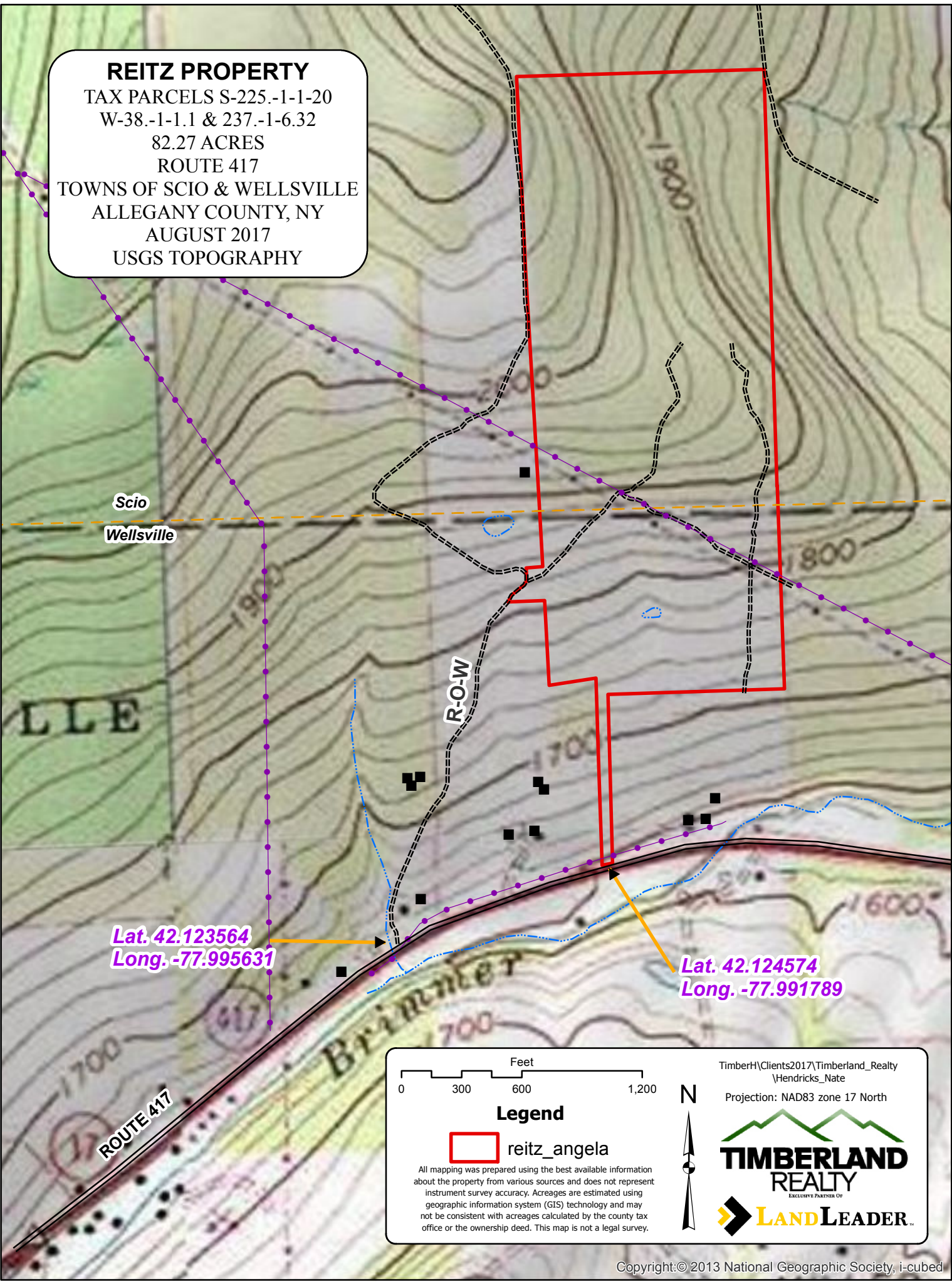


**REITZ PROPERTY**  
 TAX PARCELS S-225.-1-1-20  
 W-38.-1-1.1 & 237.-1-6.32  
 82.27 ACRES  
 ROUTE 417  
 TOWNS OF SCIO & WELLSVILLE  
 ALLEGANY COUNTY, NY  
 AUGUST 2017  
 USGS TOPOGRAPHY



0 300 600 1,200 Feet

**Legend**

reitz\_angela

All mapping was prepared using the best available information about the property from various sources and does not represent instrument survey accuracy. Acreages are estimated using geographic information system (GIS) technology and may not be consistent with acreages calculated by the county tax office or the ownership deed. This map is not a legal survey.

TimberH\Clients2017\Timberland\_Realty  
 \Hendricks\_Nate  
 Projection: NAD83 zone 17 North

**TIMBERLAND REALTY**  
EXCLUSIVE PARTNER OF

**LAND LEADER**