



44.51 ACRES

9.76 ACRES

3.53 ACRES

3.59 ACRES

2.96 ACRES

FOUR ROAD

44° 11' 29" E

1404.01'

S 45° 01' 38" E

1666.75'

N 44° 54' 28" E

93.67'

165.47'

S 45° 01' 38" E

181.05'

Liber : 390

7

4

3

2

1

N 18° 51' 02" E 597.32'

N 77° 56' 05" W 200.00'

N 82° 04' 44" E 208.13'

N 88° 06' 46" E 69.70'

N 87° 28' 19" E 149.03'

N 79° 23' 02" E 98.52'

N 72° 32' 27" E 120.20'

N 69° 03' 22" E 147.81'

N 63° 32' 14" E 67.03'

N 53° 48' 05" E 122.69'

N 53° 13' 45" E 124.98'

S 47° 31' 37" E

S 65° 34' 08" W 197.69'

S 44° 44' 29" W 214.41'

S 6° 34' 19" E 494.74'

S 9° 23' 02" W 29.31'

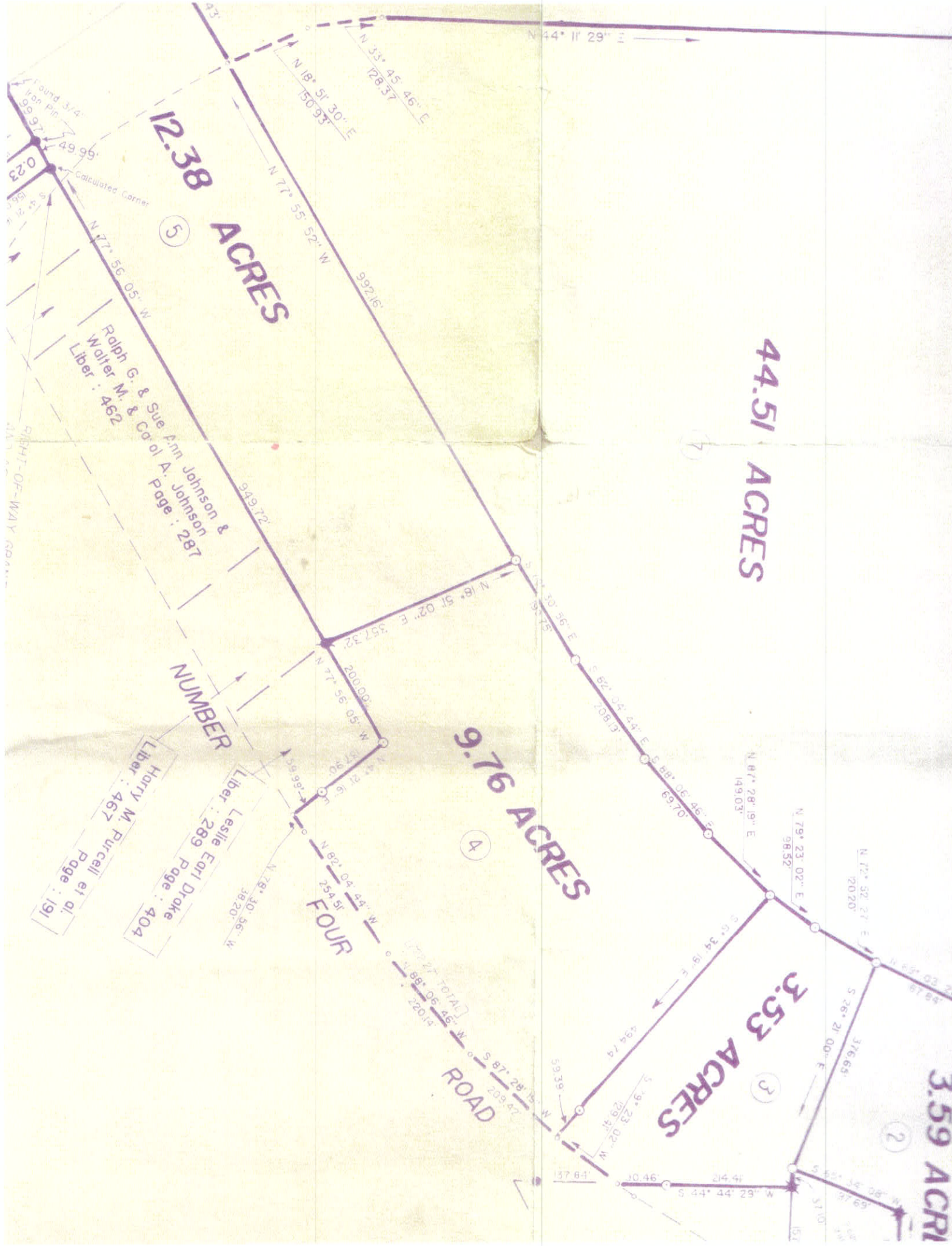
S 87° 28' 15" W 209.47'

S 88° 06' 46" W 157.84'

S 87° 28' 15" W 209.47'

S 88° 06' 46" W 157.84'

S 87° 28' 15" W 209.47'



44.51 ACRES

12.38 ACRES

9.76 ACRES

3.53 ACRES

3.59 ACRES

5

1

4

3

2

Ralph G. & Sue Ann Johnson & Walter M. & Carol A. Johnson  
Liber : 462  
Page : 287

NUMBER

Leslie Earl Drake  
Liber : 289  
Page : 404

Harry M. Purcell et al.  
Liber : 467  
Page : 191

ROAD

TOTAL  
220.12

Found 3/4  
195 pin

Calculated Corner

RIGHT-OF-WAY ROAD

