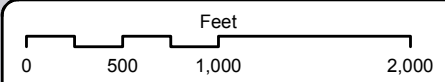
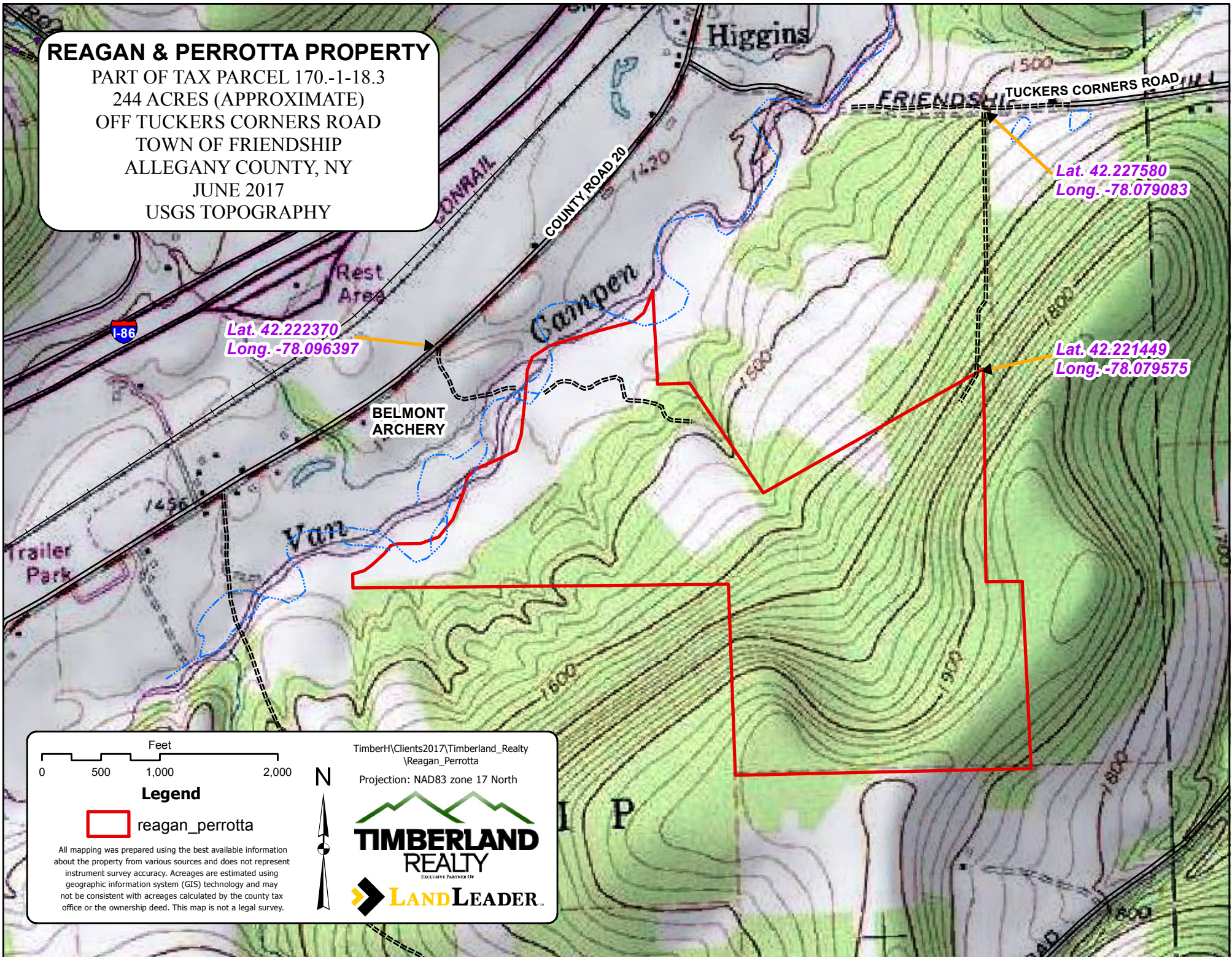


REAGAN & PERROTTA PROPERTY

PART OF TAX PARCEL 170.-1-18.3
244 ACRES (APPROXIMATE)
OFF TUCKERS CORNERS ROAD
TOWN OF FRIENDSHIP
ALLEGANY COUNTY, NY
JUNE 2017
USGS TOPOGRAPHY



Legend

 reagan_perrotta

All mapping was prepared using the best available information about the property from various sources and does not represent instrument survey accuracy. Acreages are estimated using geographic information system (GIS) technology and may not be consistent with acreages calculated by the county tax office or the ownership deed. This map is not a legal survey.



TimberH\Clients2017\Timberland_Realty
\Reagan_Perrotta
Projection: NAD83 zone 17 North



TIMBERLAND REALTY
EXCLUSIVE PARTNER OF



LAND LEADER