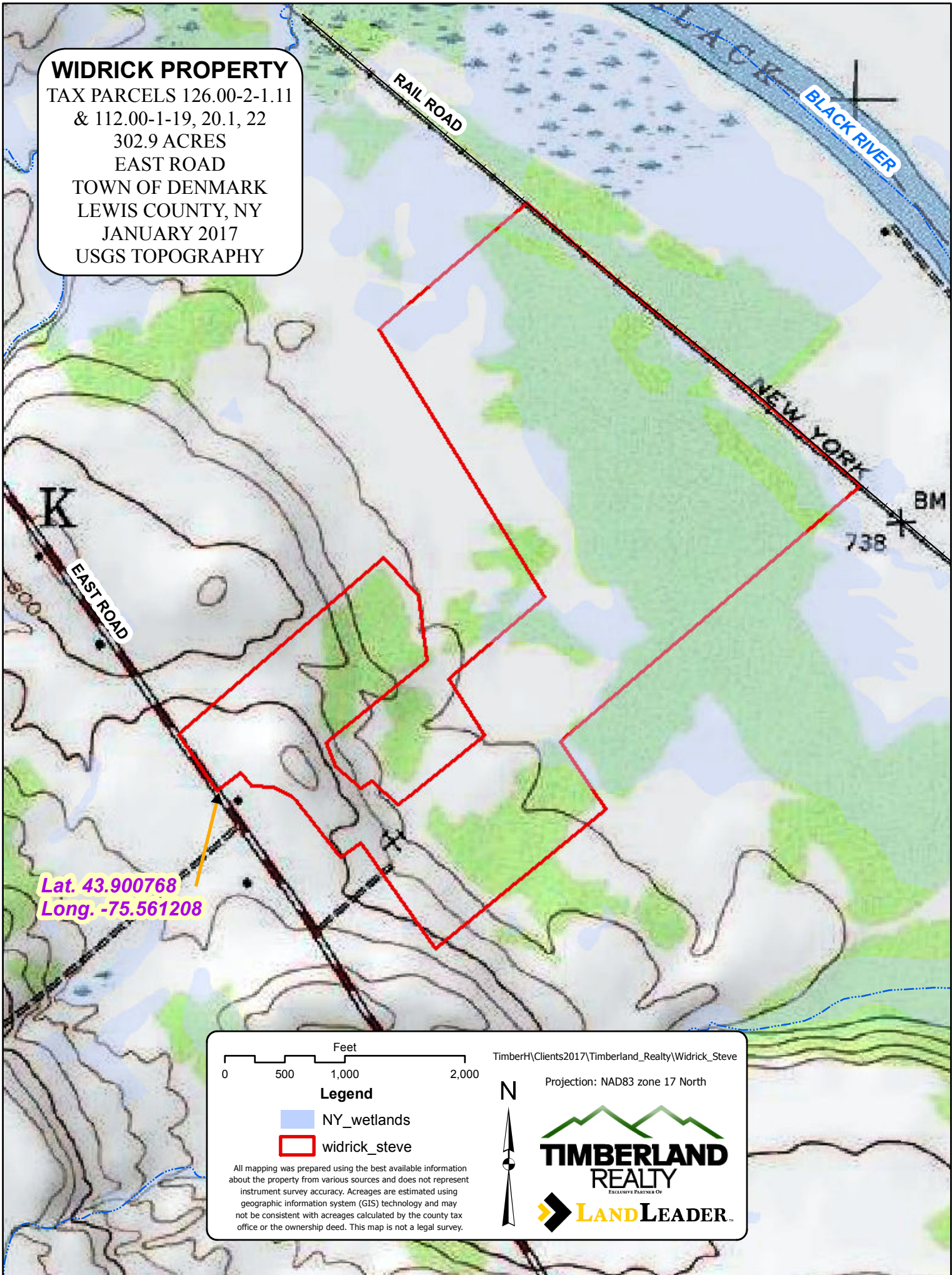
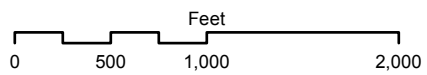


WIDRICK PROPERTY

TAX PARCELS 126.00-2-1.11
& 112.00-1-19, 20.1, 22
302.9 ACRES
EAST ROAD
TOWN OF DENMARK
LEWIS COUNTY, NY
JANUARY 2017
USGS TOPOGRAPHY



Lat. 43.900768
Long. -75.561208



Legend

- NY_wetlands
- widrick_steve

All mapping was prepared using the best available information about the property from various sources and does not represent instrument survey accuracy. Acreages are estimated using geographic information system (GIS) technology and may not be consistent with acreages calculated by the county tax office or the ownership deed. This map is not a legal survey.

TimberH\Clients2017\Timberland_Realty\Widrick_Steve

Projection: NAD83 zone 17 North

