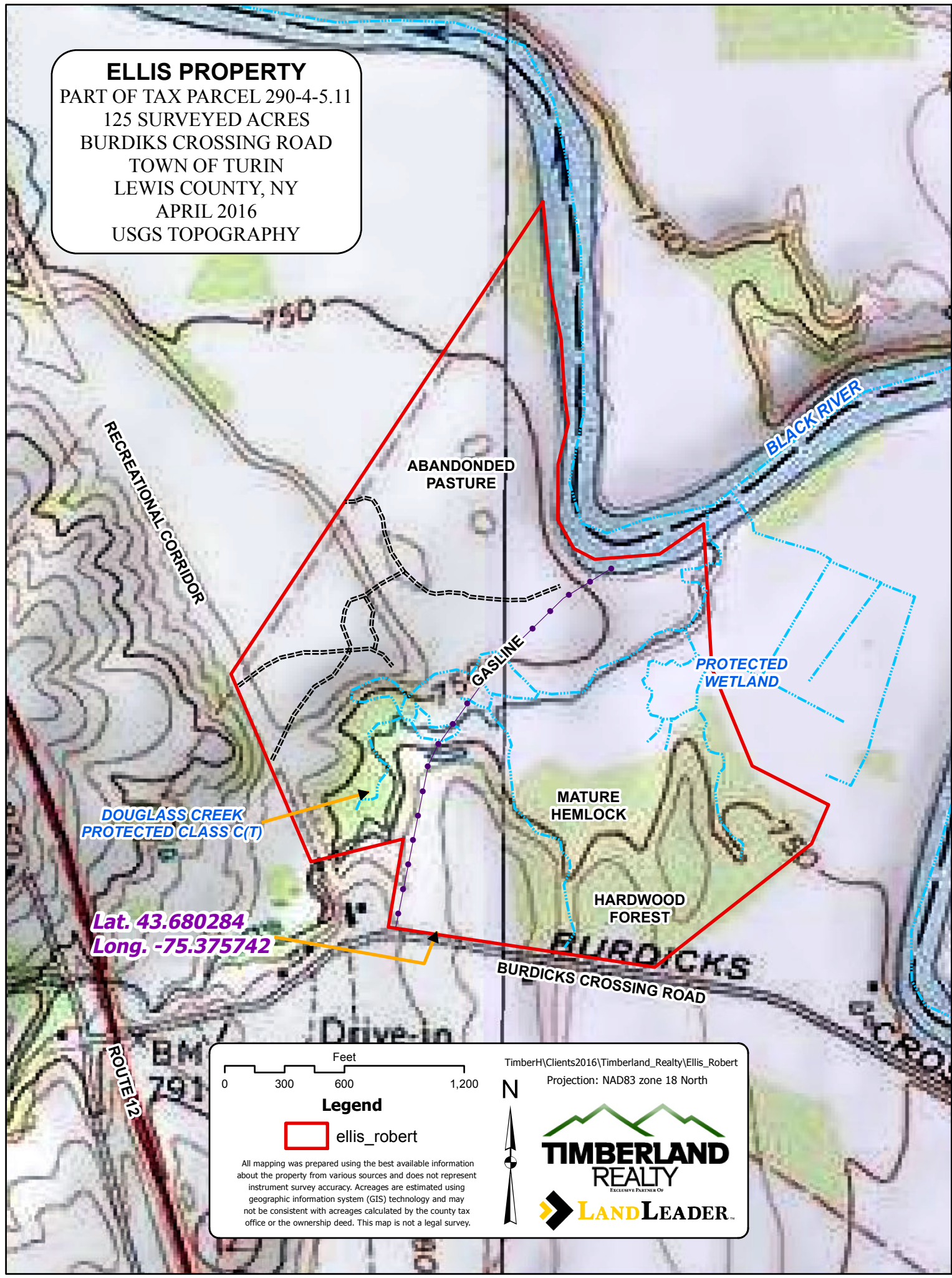


ELLIS PROPERTY
 PART OF TAX PARCEL 290-4-5.11
 125 SURVEYED ACRES
 BURDIKS CROSSING ROAD
 TOWN OF TURIN
 LEWIS COUNTY, NY
 APRIL 2016
 USGS TOPOGRAPHY



DOUGLASS CREEK
 PROTECTED CLASS C(T)

Lat. 43.680284
 Long. -75.375742

0 300 600 1,200 Feet

Legend

ellis_robert

All mapping was prepared using the best available information about the property from various sources and does not represent instrument survey accuracy. Acreages are estimated using geographic information system (GIS) technology and may not be consistent with acreages calculated by the county tax office or the ownership deed. This map is not a legal survey.

TimberH\Clients2016\Timberland_Realty\Ellis_Robert
 Projection: NAD83 zone 18 North

TIMBERLAND REALTY
 EXCLUSIVE PARTNER OF
LAND LEADER