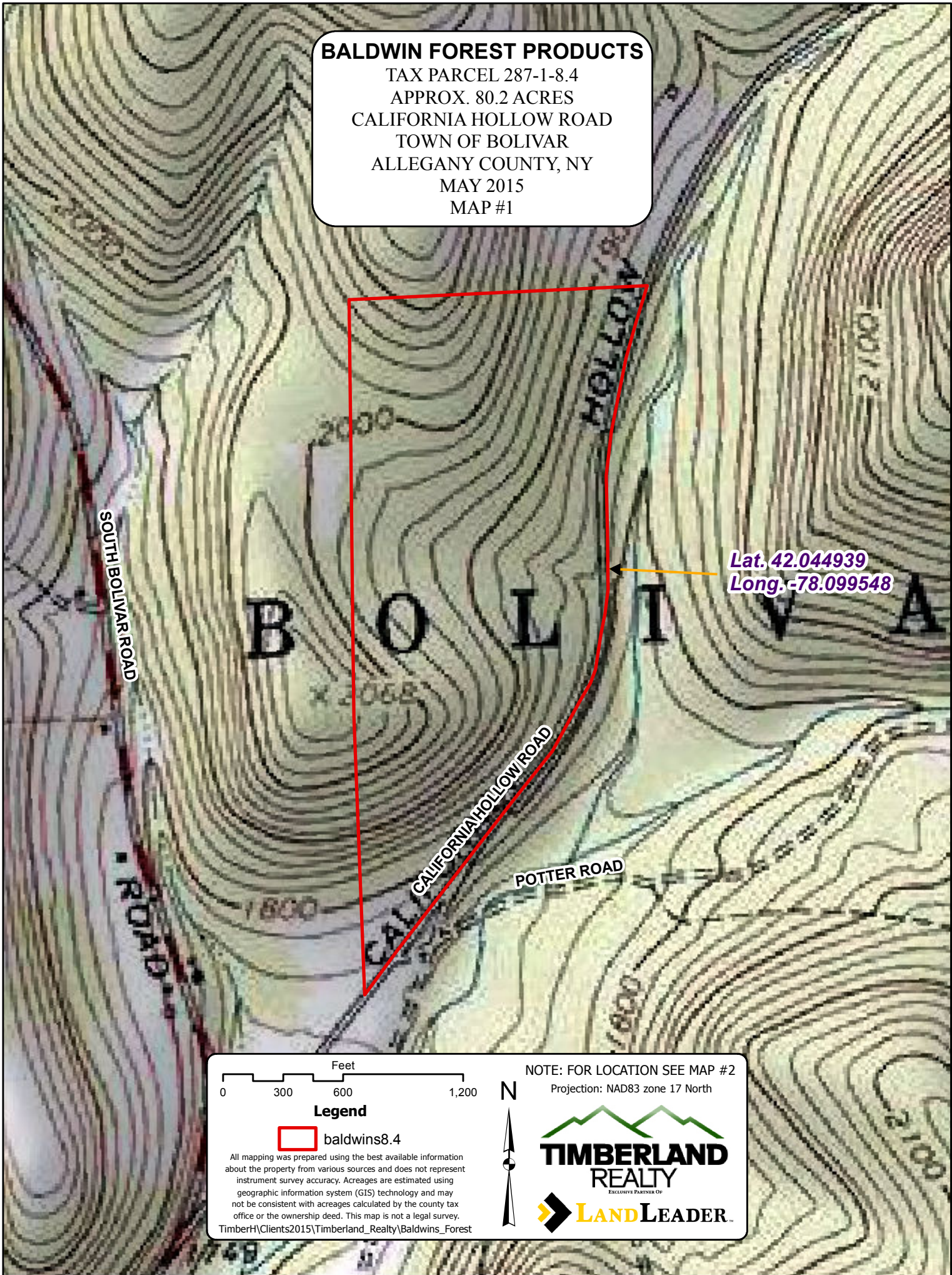
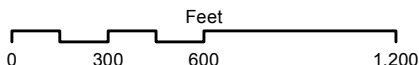


BALDWIN FOREST PRODUCTS

TAX PARCEL 287-1-8.4
APPROX. 80.2 ACRES
CALIFORNIA HOLLOW ROAD
TOWN OF BOLIVAR
ALLEGANY COUNTY, NY
MAY 2015
MAP #1



Lat. 42.044939
Long. -78.099548



Legend

 baldwins8.4

All mapping was prepared using the best available information about the property from various sources and does not represent instrument survey accuracy. Acreages are estimated using geographic information system (GIS) technology and may not be consistent with acreages calculated by the county tax office or the ownership deed. This map is not a legal survey.
TimberH\Clients\2015\Timberland_Realty\Baldwins_Forest

NOTE: FOR LOCATION SEE MAP #2
Projection: NAD83 zone 17 North

