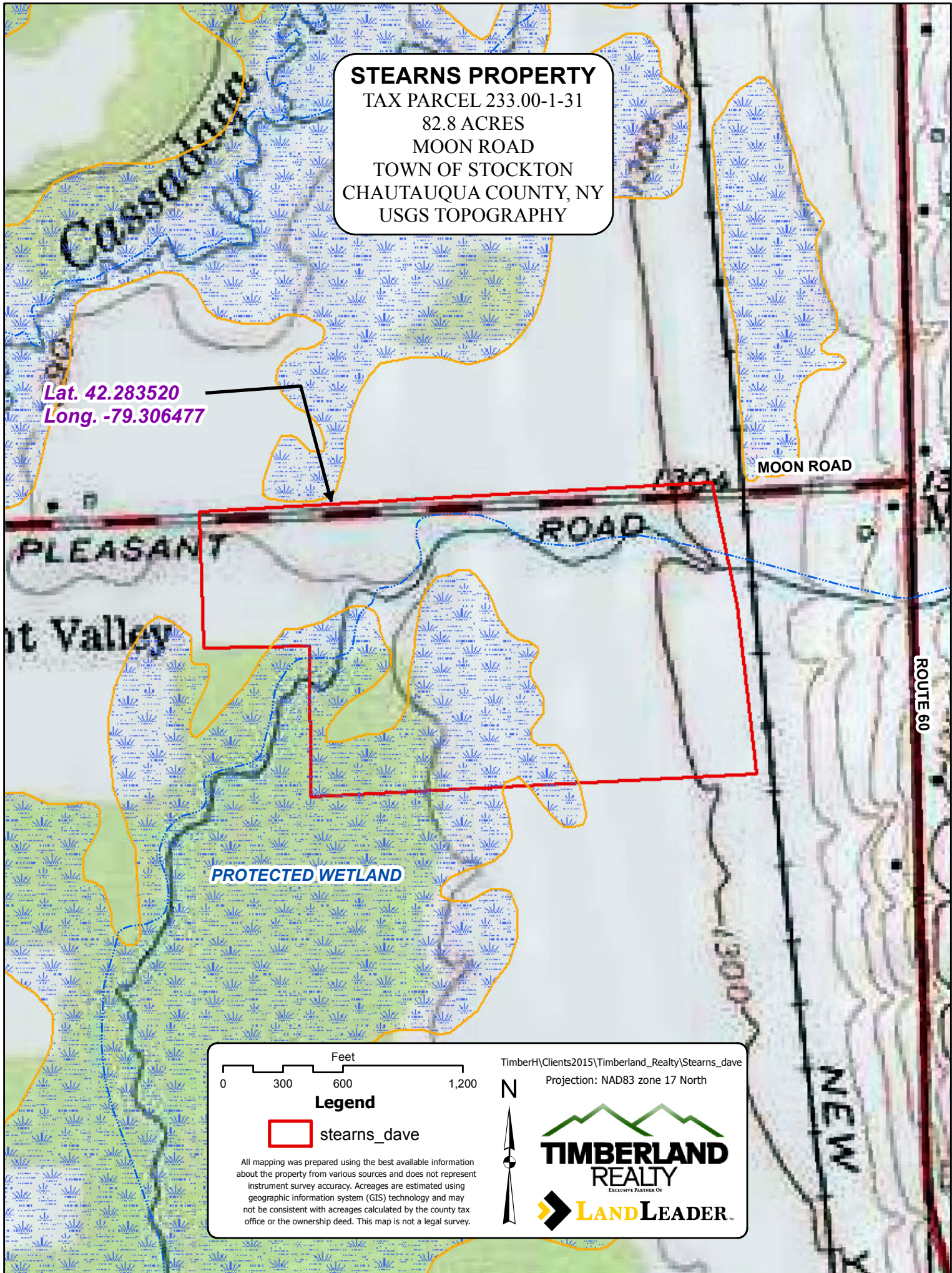


STEARNS PROPERTY
TAX PARCEL 233.00-1-31
82.8 ACRES
MOON ROAD
TOWN OF STOCKTON
CHAUTAUQUA COUNTY, NY
USGS TOPOGRAPHY


Lat. 42.283520
Long. -79.306477



0 300 600 1,200 Feet

TimberH\Clients2015\Timberland_Realty\Stearns_dave
Projection: NAD83 zone 17 North

Legend

 stearns_dave

All mapping was prepared using the best available information about the property from various sources and does not represent instrument survey accuracy. Acreages are estimated using geographic information system (GIS) technology and may not be consistent with acreages calculated by the county tax office or the ownership deed. This map is not a legal survey.

TIMBERLAND REALTY
EXCLUSIVE PARTNER OF
LAND LEADER