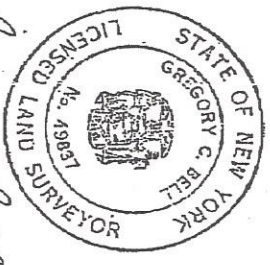
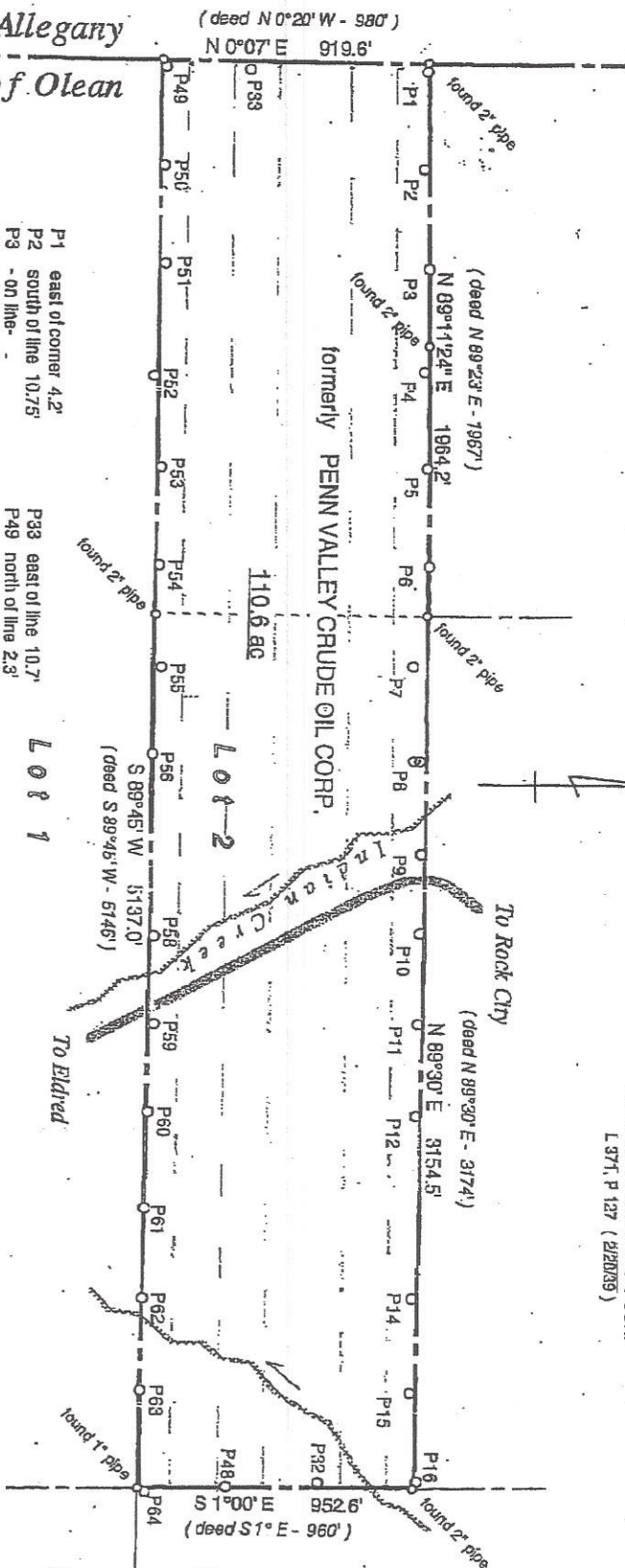


© Copyright 1992 Heritage Surveys  
Unauthorized duplication is a violation  
of applicable laws.

Town of Allegany  
Town of Olean

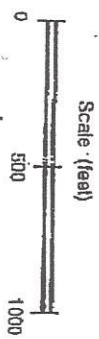
- P1 east of corner 4.2'
  - P2 south of line 10.75'
  - P3 - on line -
  - P4 south of line 8.3'
  - P5 south of line 2.1'
  - P6 south of line 0.4'
  - P7 south of line 44.3'
  - P8 south of line 25.15'
  - P9 south of line 6.6'
  - P10 south of line 4.0'
  - P11 south of line 3.8'
  - P12 south of line 4.2'
  - P14 south of line 3.1'
  - P15 south of line 2.5'
  - P16 north of corner 6.0'
  - P32 west of line 4.5'
  - P48 west of line 2.95'
- P33 east of line 10.7'
  - P49 north of line 2.3'
  - P50 north of line 8.7'
  - P51 north of line 12.4'
  - P52 south of line -6.9'
  - T53 north of line 0.8'
  - P54 north of line 7.9'
  - P55 north of line 10.05'
  - P58 north of line 0.0'
  - P58 north of line 4.6'
  - P60 north of line 9.6'
  - P61 south of line 1.0'
  - P62 south of line 1.6'
  - P63 south of line 1.75'



*Gregory C. Bell*

HERITAGE SURVEYS  
Gregory C. Bell  
January 31, 1992

Dead Reference:  
PENN VALLEY DEVL. CORP. 10  
PENN VALLEY CRUDE OIL CORP  
L 371, P 127 (2/20/89)



Boundary Survey

former PENN VALLEY CRUDE OIL CORP.  
**Quaker State Oil Refining Corp.**

Portion of Lot 2, sec 8; Tn 1, Rn 4 @ Rock City  
Town of Olean  
Cattaraugus Co.  
New York

This survey is subject to such  
additional facts as may be disclosed  
in a current title abstract.