

BALDWIN FOREST PRODUCTS, INC

TAX PARCELS 104.003-1-15 and 2-33.1

103.13 ACRES

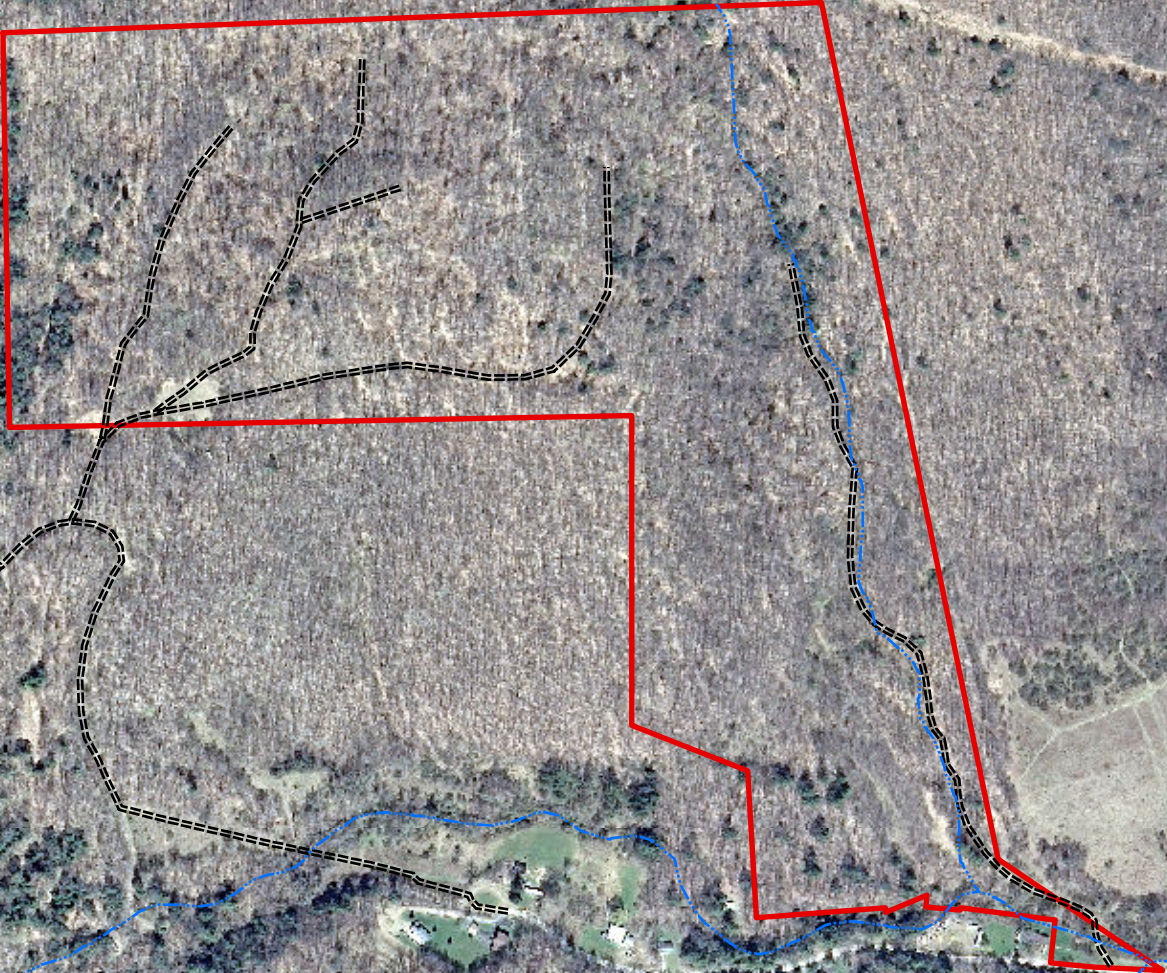
GLEASON HOLLOW ROAD

TOWN OF PORTVILLE

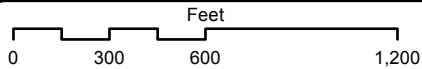
CATTARAUGUS COUNTY, NY

JULY 2015

MAP #1




Lat. 42.0202276
Lon. -78.3540913



NOTE: FOR LOCATION SEE MAP #2

Projection: NAD83 zone 17 North

Legend

 BissellBabcockMillworkInc

All mapping was prepared using the best available information about the property from various sources and does not represent instrument survey accuracy. Acreages are estimated using geographic information system (GIS) technology and may not be consistent with acreages calculated by the county tax office or the ownership deed. This map is not a legal survey.

F:\Clients2015\Timberland_Realty\BissellBabcockMill\GleasonHollow

