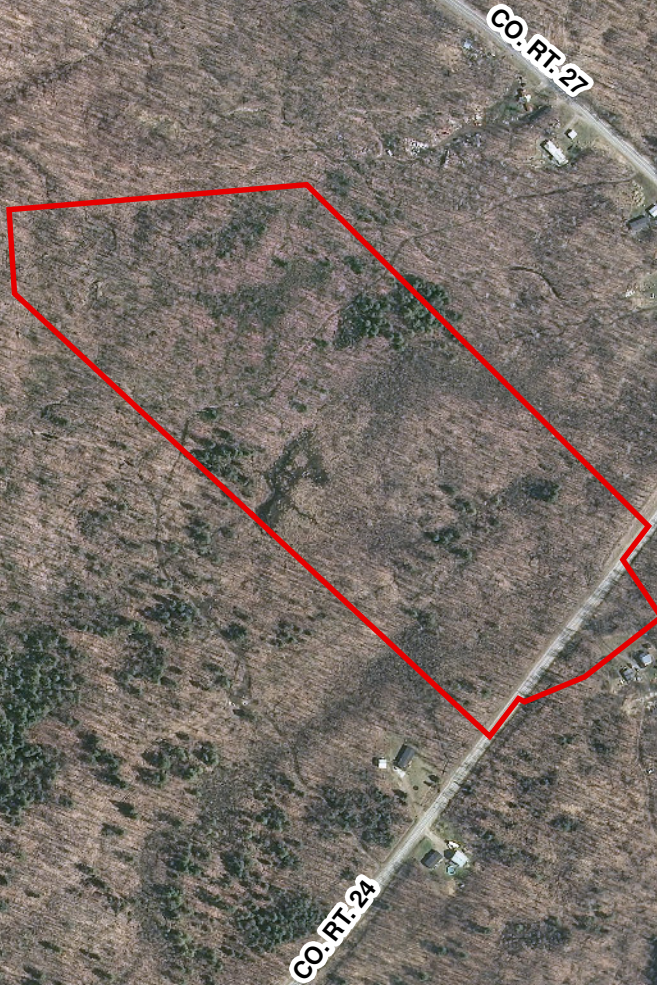
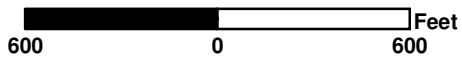


KOVACS PROPERTY
TAX PARCEL 118.004-2-13
37.3 ACRES
COUNTY ROUTE 24
TOWN OF PIERREPONT
ST. LAWRENCE CO., NY
JANUARY 2013
MAP #1



All mapping was prepared for forest management planning purposes using the best available information about the property from various sources and does not represent instrument survey accuracy. Acreages are estimated using geographic information system (GIS) technology and may not be consistent with acreages calculated by the county tax office or the ownership deed. This map is not a legal survey.



1/24/2013- MAP-Timber H\Clients2013\Timberland Realty\Kovacs_David



FOR LOCATION & TOPOGRAPHY SEE MAP #2

Lat. 44.4772
Long. 75.0769

